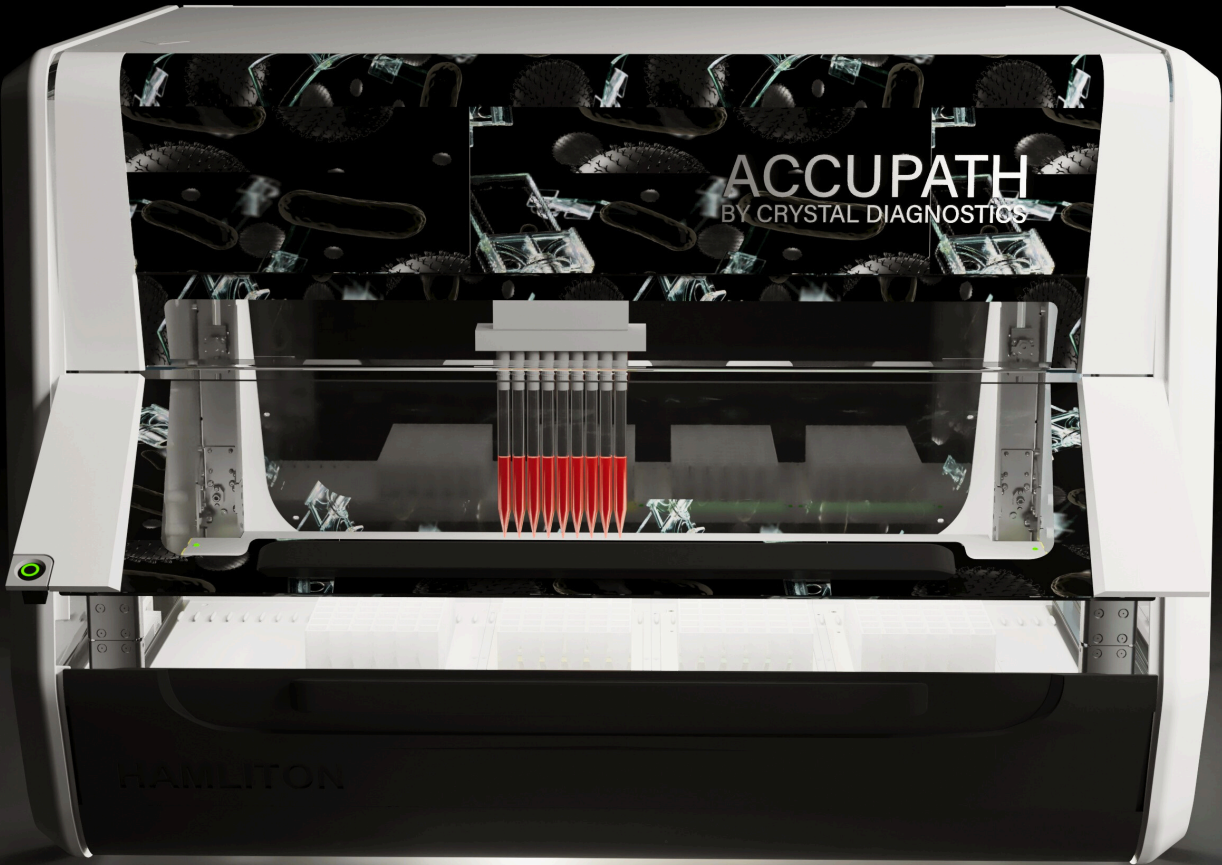


Crystal[®]
Diagnostics



2024 CATALOG

CONSUMABLES



PBS TRAY- 32

A PBS tray is used for sample washes and IMS sample concentration phase of the AutoXpress system. PBS trays are loaded into the AutoXpress the PBS Tray tower in the AutoXpress system.

Pricing Varies



PBS POWDER PACKET

Our Ultra High Grade PBS Powder Packets are essential for sample washes and IMS concentration in the AutoXpress system, ensuring efficient and consistent sample processing when loaded into the system's PBS Tray tower.

\$-



PBS BOTTLE KIT

The PBS Bottle Kit is required for use with the AutoXpress system. This kit serves as an in-house storage system for PBS and liquid waste that is used in the sample protocol. The PBS Bottle Kit includes-2: 2 L plastic PBS bottles, waste hose, fill hose, fill cap, waste cap, AX funnel, and O-rings.



RDR WASTBOX

Cardboard waste box for the reader functions in the AutoXpress system.



IMS WASTERBOX

Cardboard waste box for the IMS functions in the AutoXpress system.

SIZES & PRICING

\$-



DEEP WELL PLT- 80

Custom Deep Well Plates are required consumables to be used with the AutoXpress system. Deep Well Plates are loaded into the Deep Well Plate Tower and are used during the automated IMS concentration phase of the AutoXpress system.

PRICING

\$-

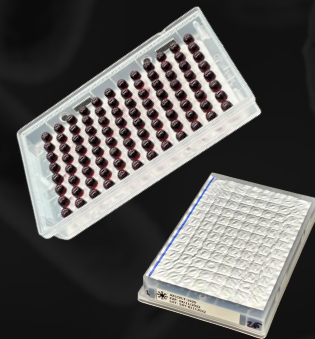


300UL LOW RETENTION PIPETTE TIPS

300 uL high retention pipette tips.

PRICING

\$-



LIQUID CRYSTAL FOR THE AUTOXPRESS- 1920

Liquid Crystal (LC) reagents are used during the detection phase of the AutoXpress. The 96 well LC plates are loaded into the LC Towers in the AutoXpress system. Includes 40-96 well plates.

PRICING

\$-

CONSUMABLES



STEC ANTIBODY KITS 512V VTESTS

These antibodies are highly selective in identifying the presence of Shiga-toxin-producing Escherichia coli (STEC) on the AutoXpress testing platform. Antibodies are loaded onto the Sample Carrier and the placed into the AutoXpress system. 16-96 well trays.

PRICING
\$-



SALMONELLA ANTIBODY KITS 768 TESTS

These antibodies are highly selective in identifying the presence of Salmonella on the AutoXpress testing platform. Antibodies are loaded onto the Sample Carrier and the placed into the AutoXpress system. 16-96 well trays.

PRICING
\$-



LISTERIA MONOCYTOGENES ANTIBODY KIT 768 TE

These antibodies are highly selective in identifying the presence of Listeria monocytogenes on the AutoXpress testing platform. Antibodies are loaded onto the Sample Carrier and the placed into the AutoXpress system. 16-96 well trays.

PRICING
\$-



LISTERIA SPECIES ANTIBODY KITS 768 TESTS

These antibodies are highly selective in identifying the presence of Listeria species on the AutoXpress testing platform. Antibodies are loaded onto the Sample Carrier and the placed into the AutoXpress system. 16-96 well trays.

PRICING
\$-



ENRICHMENT MEDIA MTSB+N

Enrichment media for E. coli O157, STEC, and Salmonella testing. Media is packaged in a 10KG bucket. After dissolved and cycled through the autoclave, liquid media can be stored for extended periods from 2-10 Celsius and warmed to the desired temperature for culture growth when needed.

PRICING
\$-



ENRICHMENT MEDIA FOR LISTERIA

Enrichment media for Listeria testing. Media is packaged in a 2KG bucket.

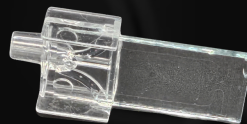
PRICING



AUTOXPRESS SAMPLE CARRIER TRAY

The Sample Carrier is a removable part of the AutoXpress testing platform, that holds the 48 test samples and either 24 or 48 antibody kits. The Sample Carrier is inserted into the Sample Carrier slot in the front of the AutoXpress system. Multiple Sample Carriers may be utilized to optimize the system workflow.

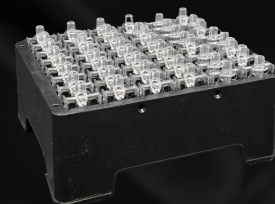
PRICING
\$-



AUTOXPRESS IMAGING SAMPLE SLIDE

AutoXpress Sample Slides are used in the imaging process of the AutoXpress testing platform. Each test will utilize 2 sample slides in the testing process. Trays are loaded into the Sample Slide tower in the AutoXpress system.

PRICING
\$-



AUTOXPRESS IMAGING SAMPLE SLIDE TRAY

AutoXpress Sample Slides are used in the imaging process of the AutoXpress testing platform. Each test will utilize 2 sample slides in the testing process. Trays are loaded into the Sample Slide tower in the AutoXpress system.